

# USER MANUAL

Model T1-200



Smart tracking,  
everywhere, anytime.



[www.trackone.io](http://www.trackone.io)

# 1 Product Parameters & Functions

## 1.1 Product Parameters

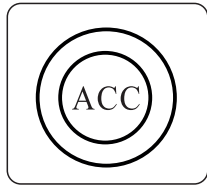
	Name	Specification
Main Features	Size	82x44x15mm
	Battery	200mAh
	Voltage Range	9V-90V
GPS	GPS Fixed Time	Hot<1 sec(Open Sky)
		Cold<32 sec(Open Sky)
	Positioning Accuracy	≤5m

## 1.2 Accessories List

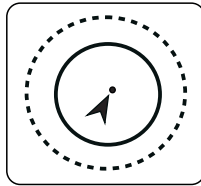
Item	Unit	Qty
Device	Pcs	1

## 2

## Product Features



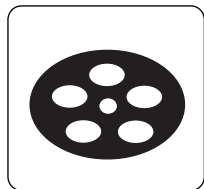
ACC  
Detection



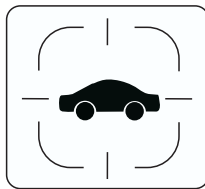
Geo-fence



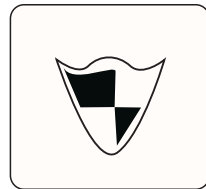
4G Network



Trace  
Playback



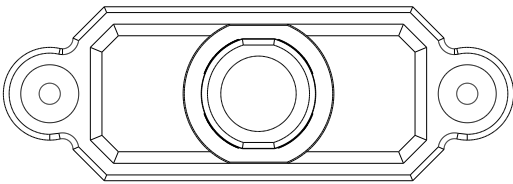
Real-time  
Tracking



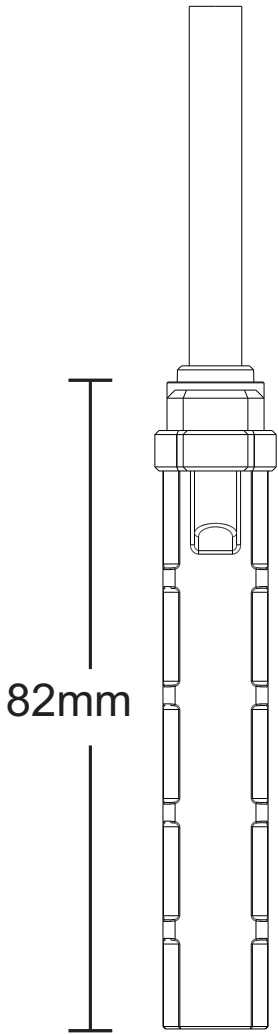
Geo-defense

3

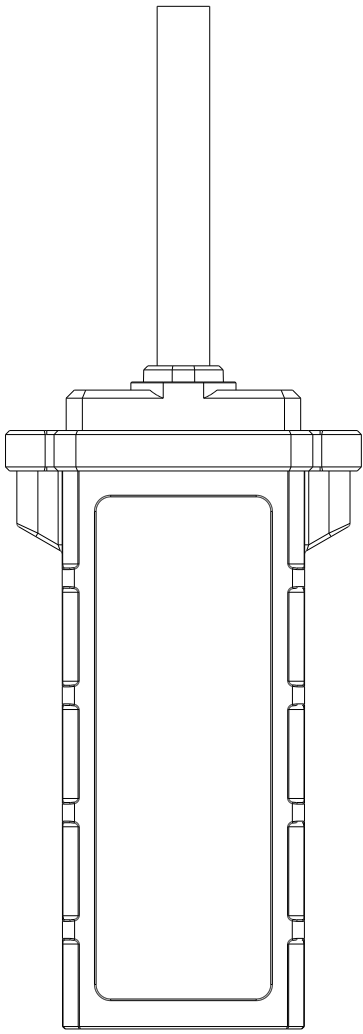
# Product Size



15mm

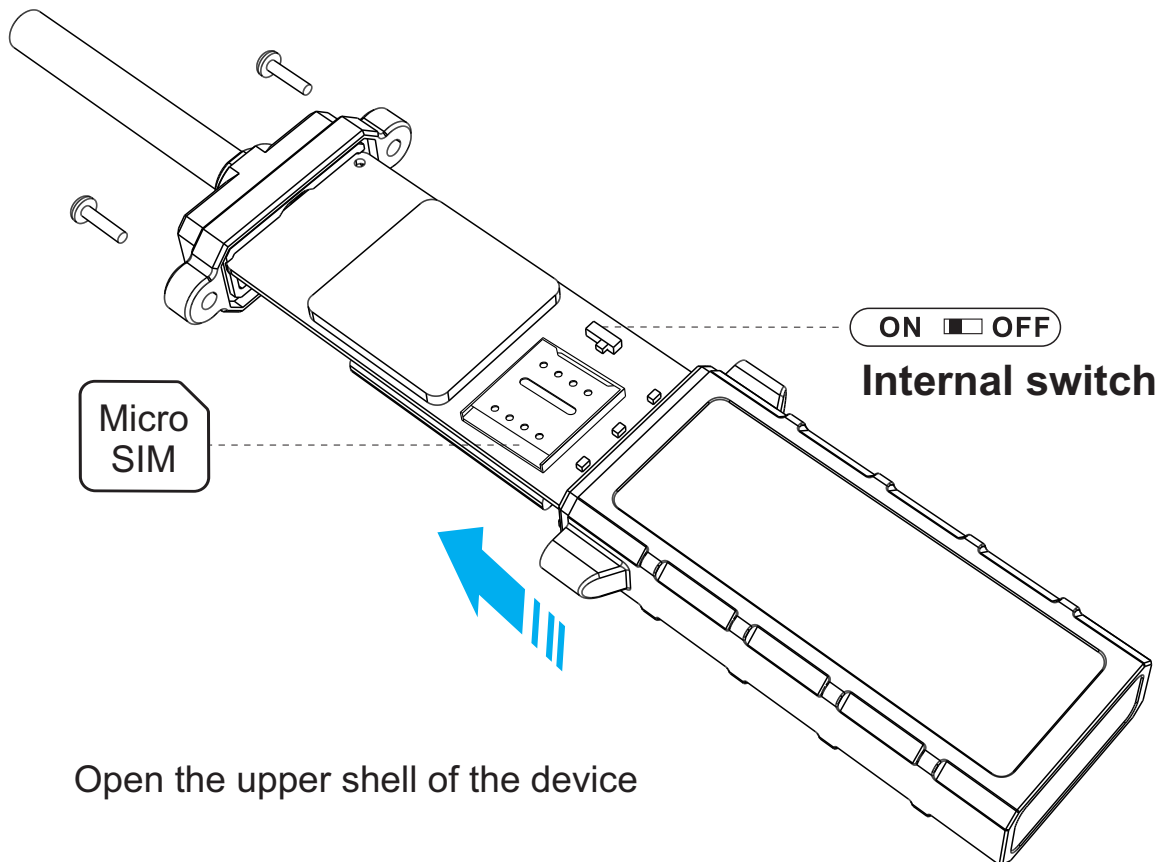


82mm

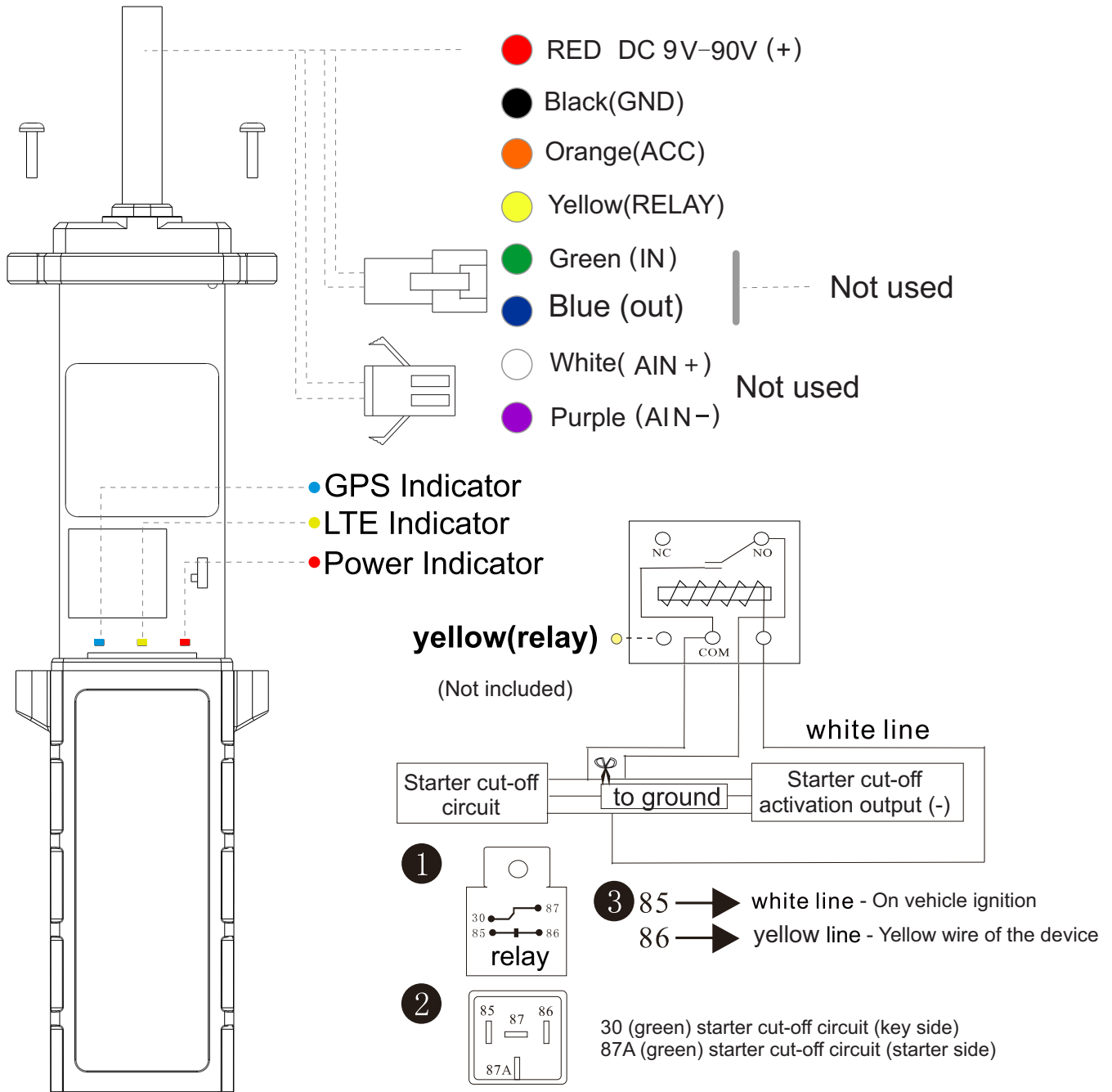


44mm

## 4 Sim Installation



## 5 Wire Connection



**Note:** Using a relay may increase power consumption and raise the risk of vehicle battery discharge. Its use is at the discretion of the user, and TrackOne disclaims all responsibility related to its use. Professional installation may be required.

## 6 LED Connection

### Red LED Light(Power Supply Status)

Status	Meaning
Slow flash	External power supply disconnected
Steady on	External power is connected
Off	Broken or sleeping

### Green LED Light(Network Status)

Status	Meaning
Slow flash	Searching for network signal
Steady on	The device is online
Off	Broken or sleeping

### Blue LED Light(GPS Status)

Status	Meaning
Slow flash	GPS initialized, searching for GPS signal
Steady on	The device is connected to GPS
Off	Broken or sleeping

## 7 Product Installation

**If you do not know how to install the device, it is recommended to seek the assistance of an experienced installer.** Installation precautions:

- Ensure that the indicators are visible and that there are no metallic obstructions.
- Secure the device using a cable tie or double-sided adhesive tape.
- The device must be installed with the side containing the label facing

## 8 Operating Description

- Connect the device to the vehicle's power supply; the indicators will begin to flash.
- If the device uses its own built-in battery, the power indicator (red) will blink slowly after being manually powered on.
- A few seconds later, the LTE and GPS indicators will remain steadily lit, and the device will switch to normal operating mode.



## 9 Troubleshooting

Problem	Description	Solution
Failed to connect the intbet	SIM card not installed	Check the SIM card
	SIM card not installed properly	Install again
	No LTE network	Move the device to the LTE network area
	Weak LTE network	Move the device to strong LTE network area
Location failed	SIM card has no LTE functions	Contact SIM card supplier to activate the LTE function
	Always reply "failed to get location"	Contact the supplier
No GPS Location	Some poor signal areas like basement, tunnels are not able to acquire GPS signals	Move the device to open sky areas

# TrackOne by Forguard

## access to portal



Play Store



App Store



Web app